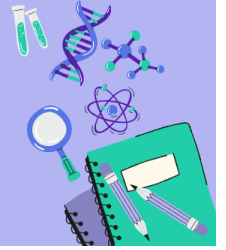




**Latina
LEADS**
LULAC.org/LatinaLEADS

Vocabulary Terms Lesson 2: Technology



Technology: is the use of knowledge to invent new things, including devices and tools, that can make our lives easier or solve problems

Equity: having equal access to resources and opportunities

Equality: everyone is treated the same exact way, regardless of any individual differences

SMART Technology: originally from the acronym “Self-Monitoring Analysis and Reporting Technology”, refers to devices that are able to transfer and receive information, analyze that data, and make decisions based on that data

Internet of Things (IoT): a type of technology through which everyday objects are connected to the internet and have the ability to transfer data over a network without requiring human-to-human or human-to-computer interaction

Smart Collars: pet collars that use technology to offer pet owners a wide range of features including tracking and monitoring a pet’s health, fitness and location

Electronic Pet Doors: pet doors that use technology that opens the pet door when it is triggered by a microchip usually located on a collar worn by a pet

Home Automation: the automatic and electronic control of household features, activity, and appliances

Domotics: a contraction of the Latin word for a home (domus) and the word robotics

Smart Refrigerator: a refrigerator that has Internet access and is able to recognize and manage items stored inside it

Virtual Assistant (or AI Assistant): cloud-based programs that understand natural language voice commands and use Internet-connected devices and/or applications to complete tasks for the user

Smart Cities: urban areas that use networks of interconnected technology to collect and analyze data to increase operational efficiency, share information with citizens, and improve the quality of government services and citizen welfare

Diversity: in the workplace, diversity means an organization employs a team of people that’s reflective of the society in which it operates